

# SURVEY PLAN OF: DISTRICT LOT 2189, CLAYOQUOT DISTRICT

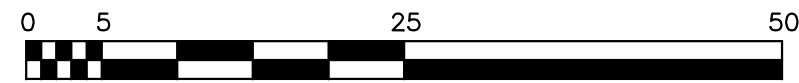
BCGS 92F011

PLAN EPC429

### LEGEND

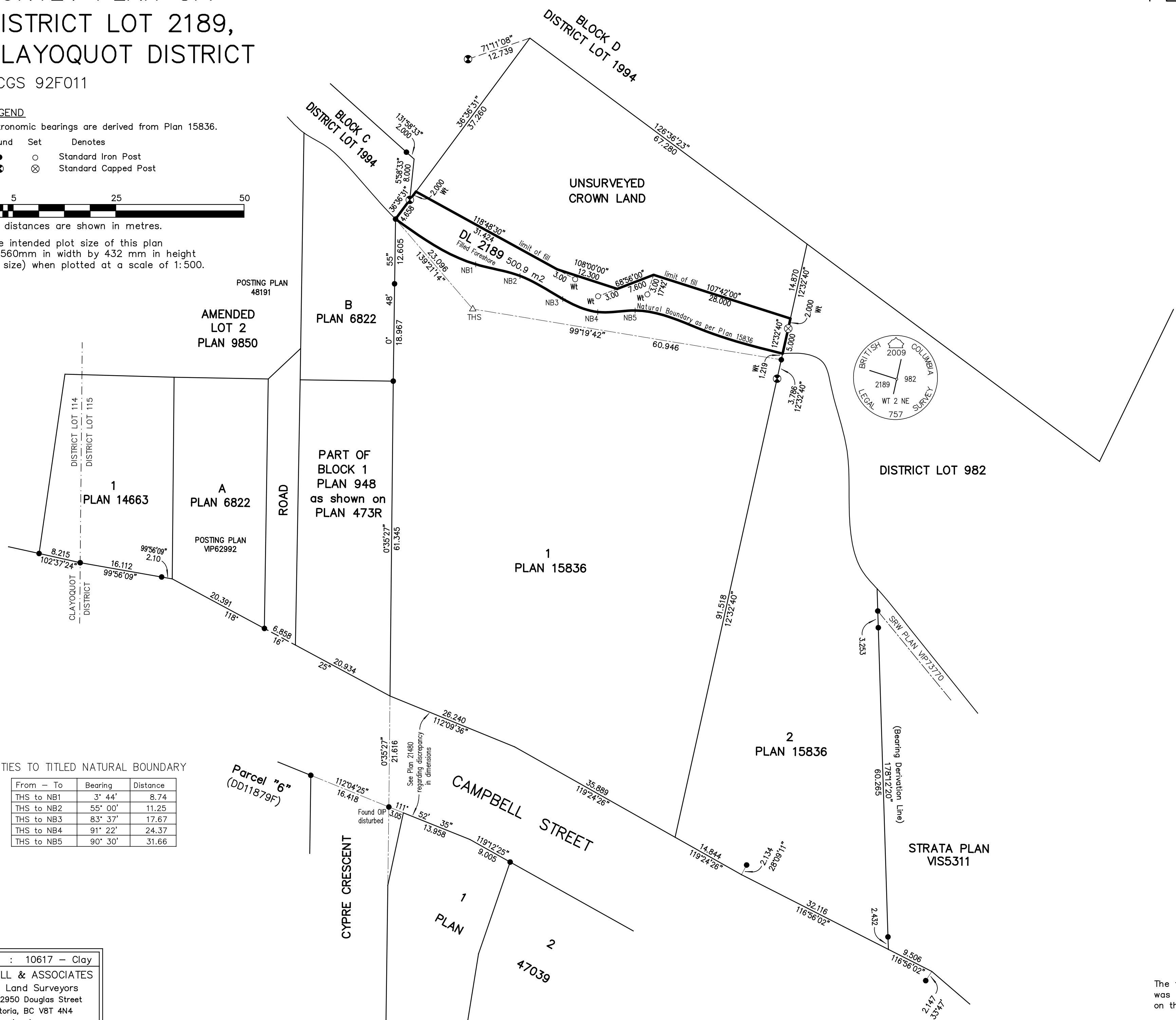
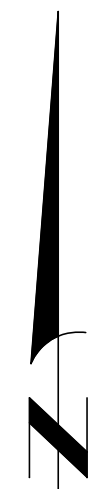
Astronomic bearings are derived from Plan 15836.

Found Set Denotes  
 ● ○ Standard Iron Post  
 ⊗ ⊗ Standard Capped Post



All distances are shown in metres.

The intended plot size of this plan is 560mm in width by 432 mm in height (C size) when plotted at a scale of 1:500.



### TIES TO TITLED NATURAL BOUNDARY

From - To	Bearing	Distance
THS to NB1	3° 44'	8.74
THS to NB2	55° 00'	11.25
THS to NB3	83° 37'	17.67
THS to NB4	91° 22'	24.37
THS to NB5	90° 30'	31.66

File : 10617 - Clay  
**POWELL & ASSOCIATES**  
 B C Land Surveyors  
 250-2950 Douglas Street  
 Victoria, BC V8T 4N4  
 phone (250) 382-8855

This plan lies within the  
 Alberni-Clayoquot Regional District  
 The field survey represented by this plan  
 was completed by James Worton, B.C.L.S.,  
 on the 18th day of June, 2009.