

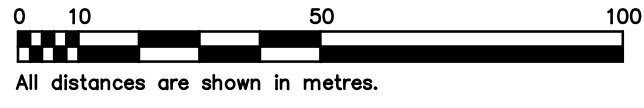
STATUTORY RIGHT OF WAY PLAN OF :
 PART OF LOT 5, SECTION 85, METCHOSIN
 DISTRICT, PLAN 12293, and
 PART OF THOSE PARTS OF SECTIONS
 83, 84, AND 85, METCHOSIN DISTRICT
 SHOWN OUTLINED IN RED ON PLAN 82 RW
 PURSUANT TO SECTION 113 LAND TITLE ACT
 B.C.G.S. 92B.043

PLAN VIP _____

Deposited in the Land Title Office at Victoria
 B.C., this _____ day of _____, 2008.

Registrar _____

SCALE 1 : 1250



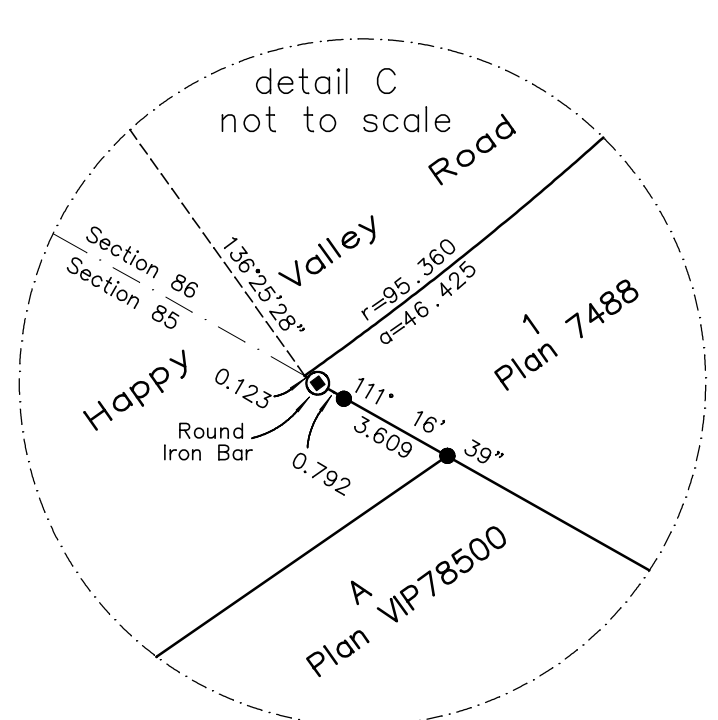
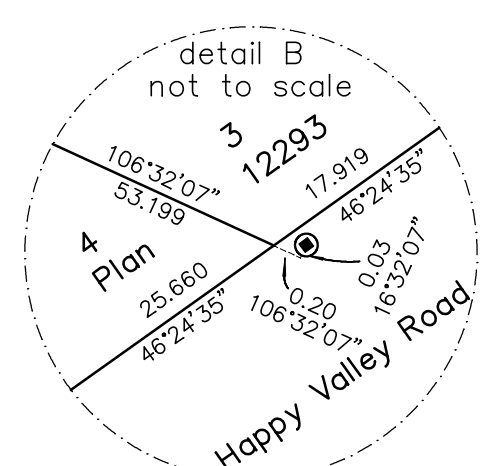
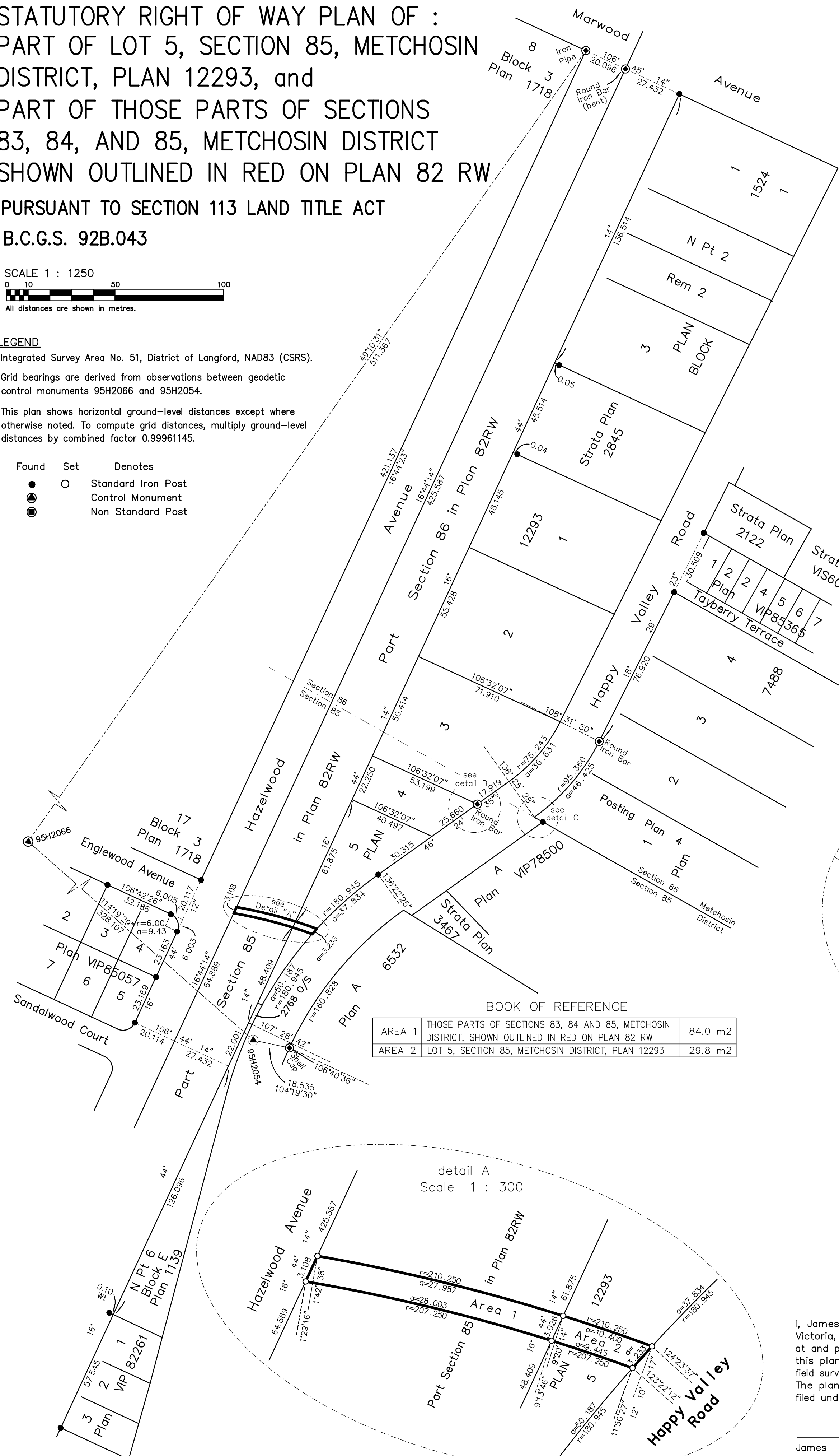
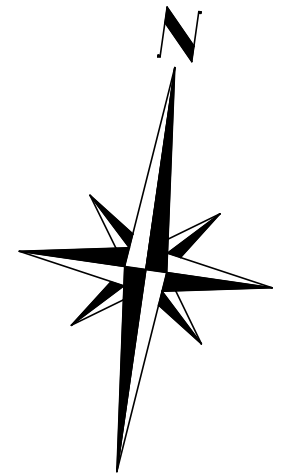
LEGEND

Integrated Survey Area No. 51, District of Langford, NAD83 (CSRS).

Grid bearings are derived from observations between geodetic control monuments 95H2066 and 95H2054.

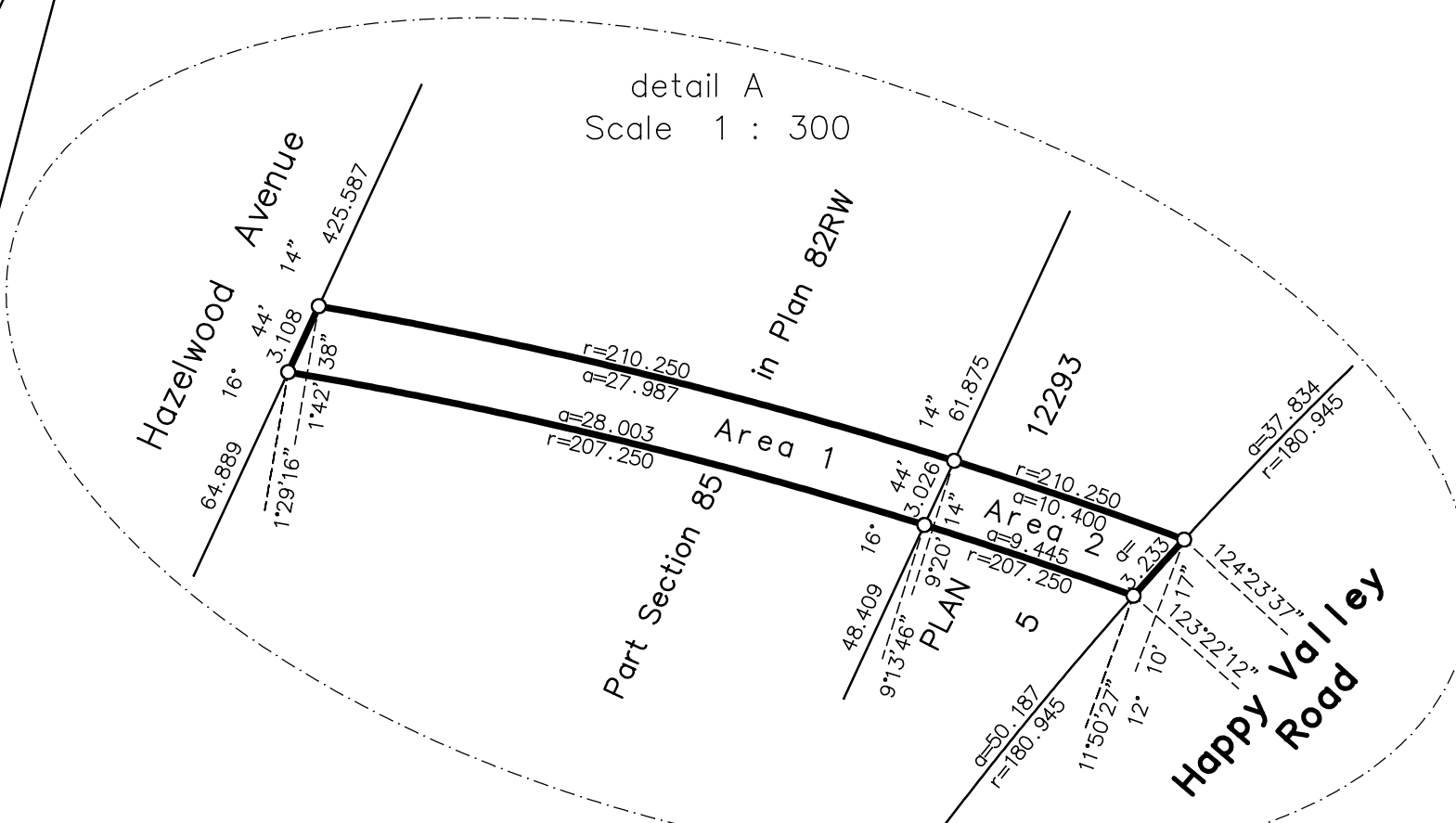
This plan shows horizontal ground-level distances except where otherwise noted. To compute grid distances, multiply ground-level distances by combined factor 0.99961145.

Found	Set	Denotes
●	○	Standard Iron Post
⊙		Control Monument
⊗		Non Standard Post



BOOK OF REFERENCE

AREA 1	THOSE PARTS OF SECTIONS 83, 84 AND 85, METCHOSIN DISTRICT, SHOWN OUTLINED IN RED ON PLAN 82 RW	84.0 m ²
AREA 2	LOT 5, SECTION 85, METCHOSIN DISTRICT, PLAN 12293	29.8 m ²



File : 9879-132w
 POWELL & ASSOCIATES
 B C Land Surveyors
 250-2950 Douglas Street
 Victoria, BC V8T 4N4
 phone (250) 382-8855

This plan lies within
 the Capital Regional District

I, James Worton, a British Columbia Land Surveyor, of Victoria, in British Columbia, certify that I was present at and personally superintended the survey represented by this plan, and that the survey and plan are correct. The field survey was completed on the 21st day of August, 2008. The plan was completed and checked, and the checklist filed under #86009, on the 27th day of August, 2008.

James Worton, B.C.L.S.